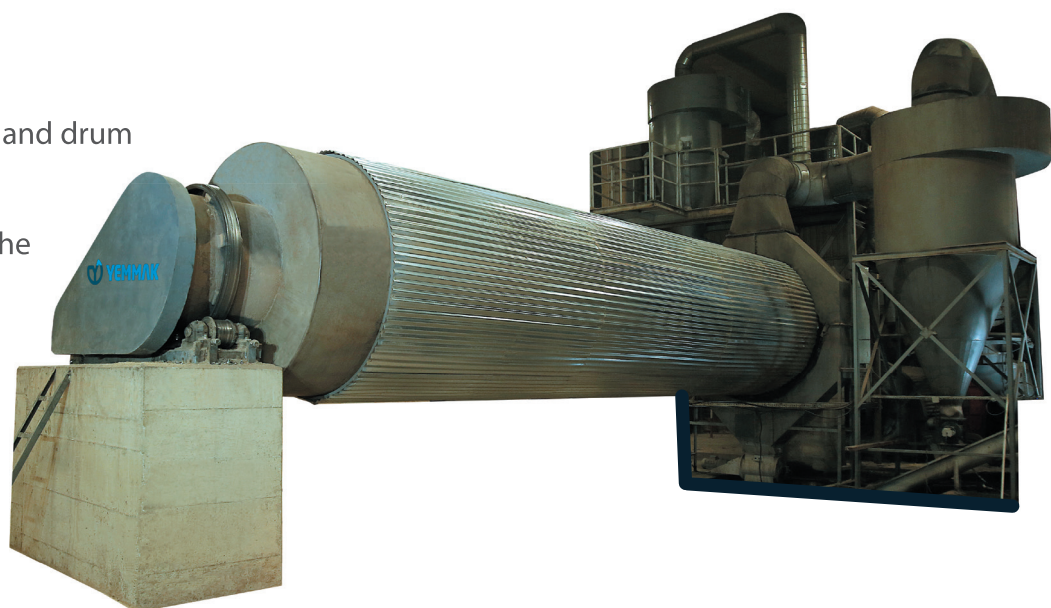


ROTARY DRUM DRYER

FEATURES

- Natural gas or solid fuel (pellet)
- Insulated combustion chamber and drum
- Variable drum speed
- Microwave humidity sensor at the dryer outlet
- Automatic fuel supply



BIOMASS



ORGANIC
FERTILIZER
PROCESSING



CHEMISTRY

 **YEMMAK**

DPDD-SF AND DPDD-NG SERIES DOUBLE PASS ROTARY DRUM DRYER

Rotary drum dryers are widely used in forest waste and residues, chemical, mining, agriculture, animal manure, wood processing industries.

The product to be dried is dried in a rotary drum dryer with hot air. Our drying systems provide drying from 90% to 5% moisture value.

Thanks to the automation structure of the process, the desired stable humidity value is provided at the dryer outlet.

It consists of combustion chamber, drum, cyclone, fan and pipes.

The combustion chamber is built with fire bricks. The outer part is insulated with glass wool. In this way, heat loss is prevented. The fuel to be burned in the combustion chamber can be solid (pellet) or natural gas.

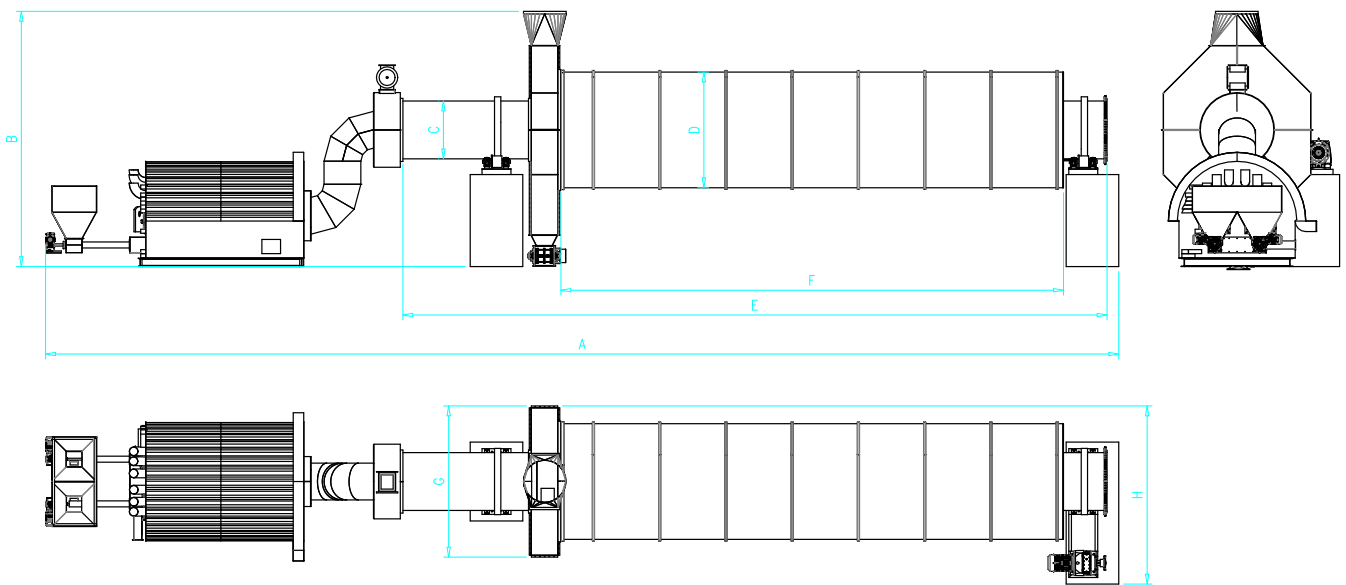
The body is manufactured as single, double or triple pass depending on the capacity and design. Thanks to the wings in the body, the product is exposed to hot air in the optimum time and drying is provided. Air locks at the inlet and outlet of the machine keep airflow under control.

Cyclone, fan and aspiration line are the equipment used to bring the product together with hot air.

The product to be dried, the moisture value of the product and the capacity are the design parameters of the dryer. Variables such as rotary drum dryer size, fan flow rate, cyclone size and fuel type are determined depending on the needs of the process.

AREAS OF USAGE

- Biomass
- Organic Fertilizer Processing
- Chemistry



| MODEL | DIMENSIONS (mm) | | | | | | | | DRUM MOTOR | FAN MOTOR | OUTLET CAPACITY (ton/s) | INLET MOISTURE CONTENT (%) | OUTLET MOISTURE CONTENT (%) |
|-----------|-----------------|------|------|------|-------|-------|------|------|------------|------------|-------------------------|----------------------------|-----------------------------|
| | A | B | C | D | E | F | G | H | POWER (kW) | POWER (kW) | | | |
| DPDD-SF10 | 20450 | 4855 | 1100 | 2200 | 13500 | 10000 | 2875 | 3390 | 15 | 45 | 5 | 40 | 10 |

600 Evler Mah. Balıkesir Asf. Sol Taraf No: 96, 10201 Bandırma / Balıkesir

P: +90 266 733 83 63 (3 Lines) • F: +90 266 733 83 66

[f](#) [in](#) [ig](#) [yt](#) | yemmak.com

